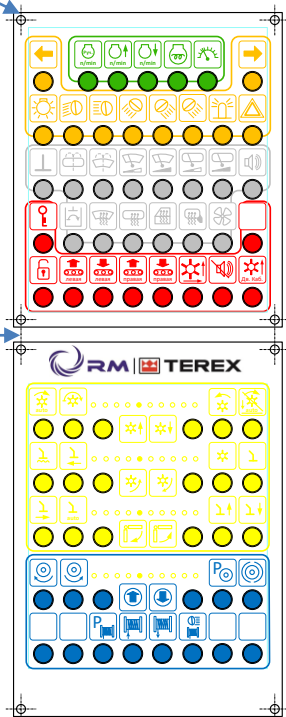


# **Noah System Electronics GmbH**

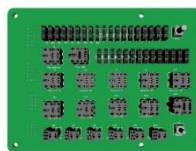
DEVELOPMENT AND PRODUCTION OF POWER ELECTRONICS

**COMPLETE SOLUTIONS**

# Snowcat



Модуль АСУ 2.0



Модуль АСУ 2.0



К потребителям и исполнительным механизмам



## Description

- project: 000067, 000082, 000083, control panel
- qty: 30 per year
- status: series

## Features

- the modules are synchronized with each other and represent a single system
- the intuitive control panel has over 70 buttons with the ability to reassign them
- control of the most functions via control panel
- management of important functions directly from the steering column (milling cutter, winch, lighting, rear linkage)
- complete information about the machine is displayed (electronic instrument panel, error reading, etc.)
- ability to customize operating modes and attachments using the display
- power modules to control periphery
- communication of all modules through CAN bus
- programmable work algorithm
- total input current: more than 150 A



# KAMAZ Master

## Description

- project: 000022, 000100
- qty: 11 per year
- status: series

## Features

- power modules to control periphery
- communication of all modules through CAN bus
- programmable work algorithm
- total input current: Over 150 A



Thanks!

Questions?