

# Noah System Electronics GmbH

DEVELOPMENT AND PRODUCTION OF POWER ELECTRONICS

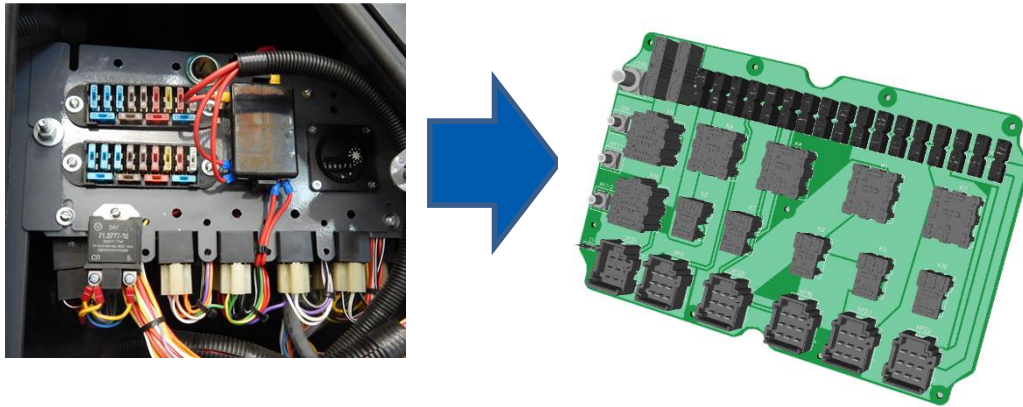
**CONSTRUCTION MACHINERY**

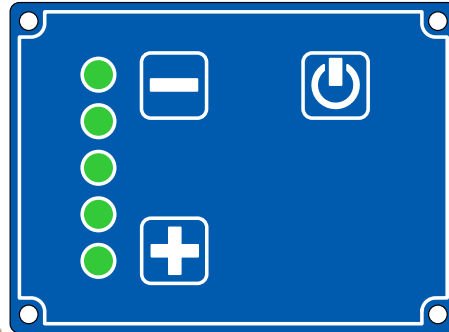
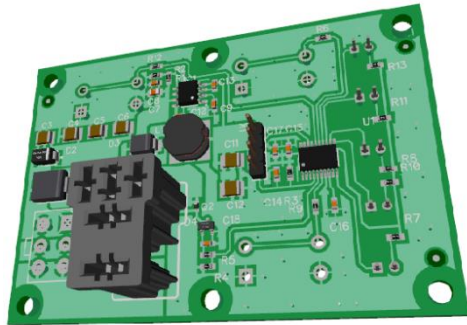
## Description

- application : grader with Cummins engine
- qty: 10 per year
- project: 000086a
- status: testing

## Features

- using innovative Press-fit technology
- compactness
- increased vibration resistance
- power distribution module
- total current more than 200 A
- faster assembly on the conveyor
- elimination of errors during assembly





## Description

- application : control panel
- qty: 200 per year
- project: 0000862
- status: pre-series

## Features

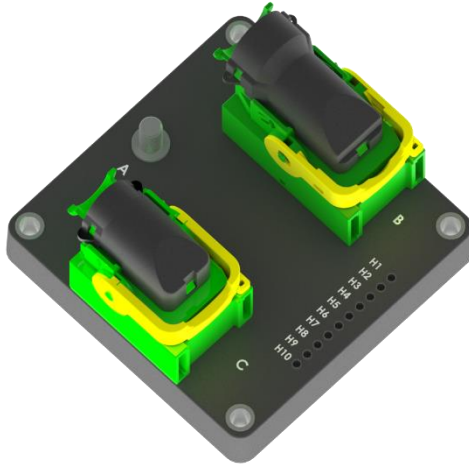
- using innovative Press-fit technology
- compactness
- increased vibration resistance
- power distribution module
- faster assembly on the conveyor
- elimination of errors during assembly

## Description

- application : bulldozers, pipe bulldozers
- qty: 50 per year
- project: ASU 2.1
- status: testing

## Features

- programmable Power Module ASU 2.1
- CAN bus
- dimensions: 115x115x70 mm (with connectors)
- switching current 10 A
- degree of protection IP 67



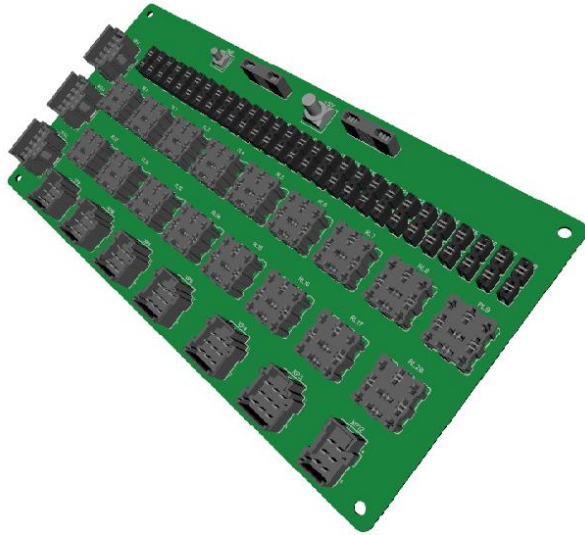
# KEMZ - Loader

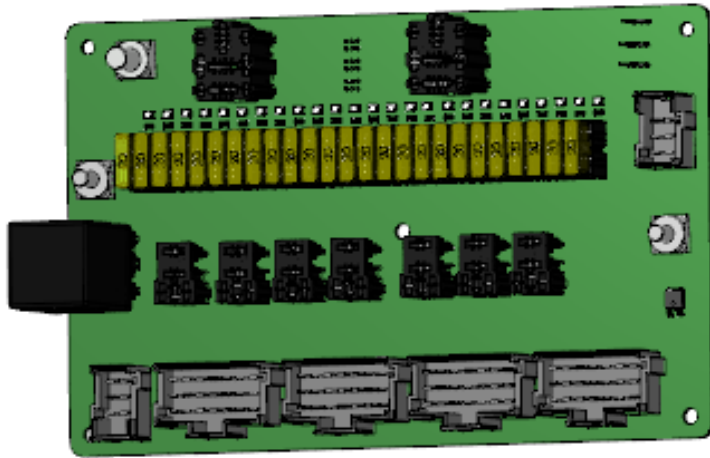
## Description

- application : loader ANT3000
- qty: 100 per year
- project: 000053
- status: testing

## Features

- using innovative Press-fit technology
- compactness
- increased vibration resistance
- power distribution module
- total current more than 250 A
- faster assembly on the conveyor
- elimination of errors during assembly





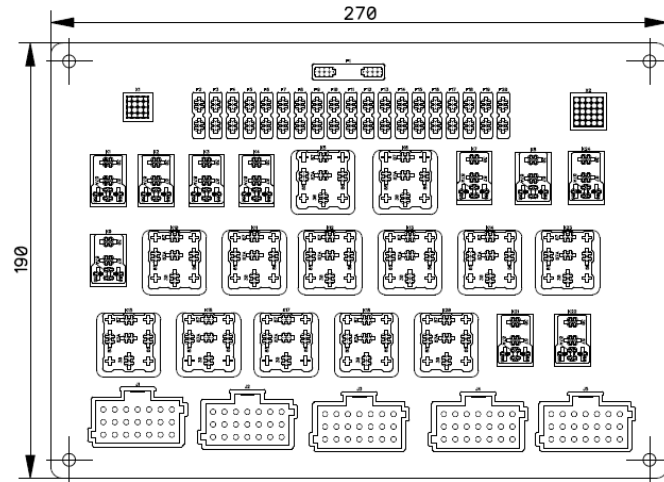
## Description

- application : loader ANT3000
- qty: 100 per year
- project: 000053
- status: testing

## Features

- using innovative Press-fit technology
- compactness
- increased vibration resistance
- power distribution module
- total current more than 250 A
- faster assembly on the conveyor
- elimination of errors during assembly





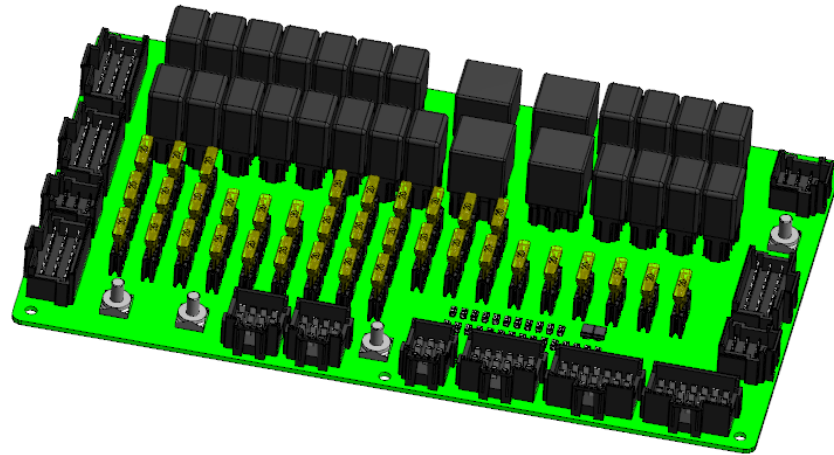
## Description

- application : loader PK-70
- qty: 100 per year
- project: 000073
- status: testing

## Features

- using innovative Press-fit technology
- compactness
- increased vibration resistance
- power distribution module
- total current more than 200 A
- faster assembly on the conveyor
- elimination of errors during assembly





## Description

- application : excavator / loader TLB 825
- qty: 400 per year
- project: 000068
- status: testing

## Features

- using innovative Press-fit technology
- compactness
- increased vibration resistance
- power distribution module
- total current more than 250 A
- faster assembly on the conveyor
- elimination of errors during assembly





Thanks!

Questions?